

Interlibrary Services LAC Report February, 2011

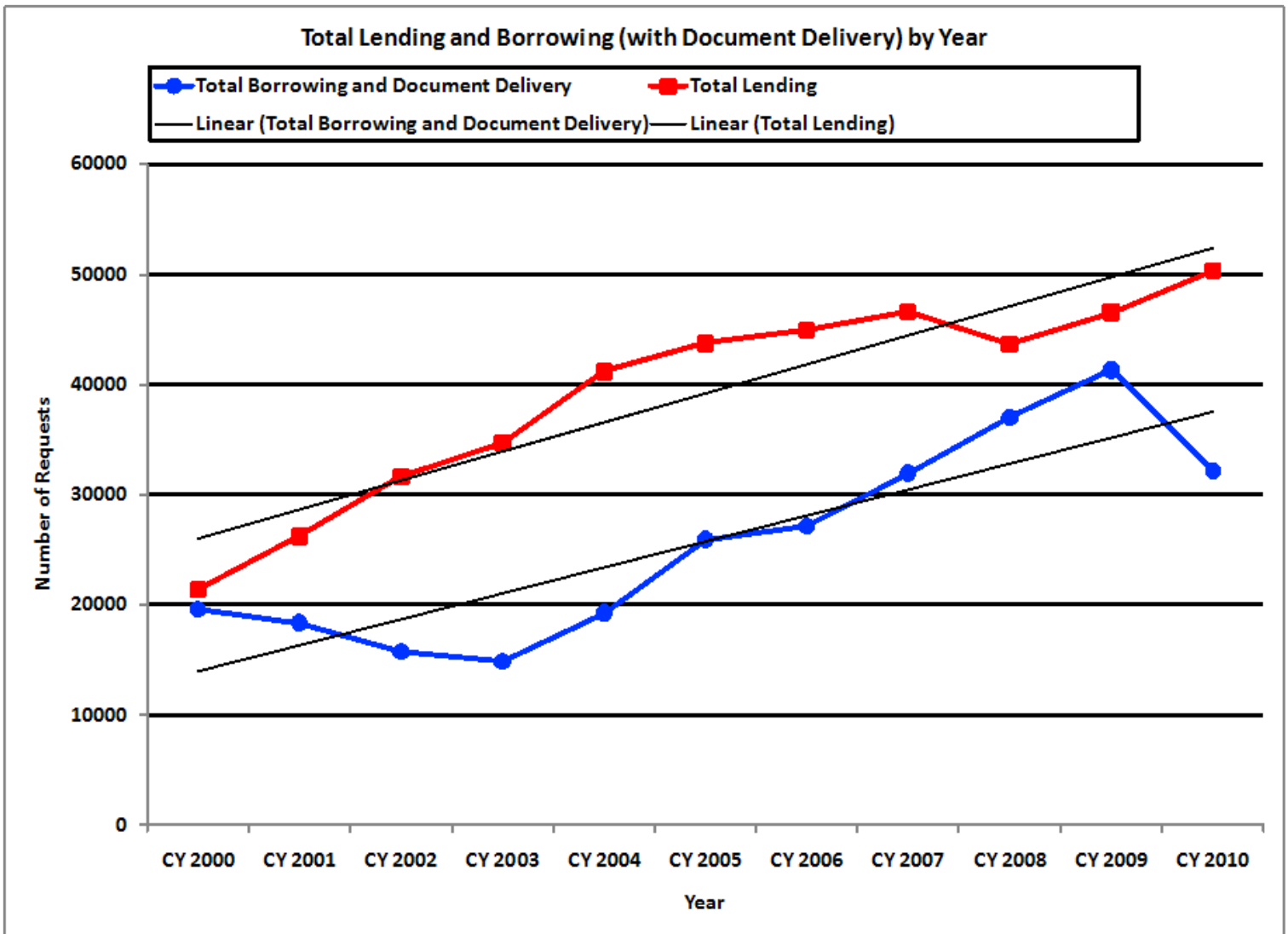
Staff:

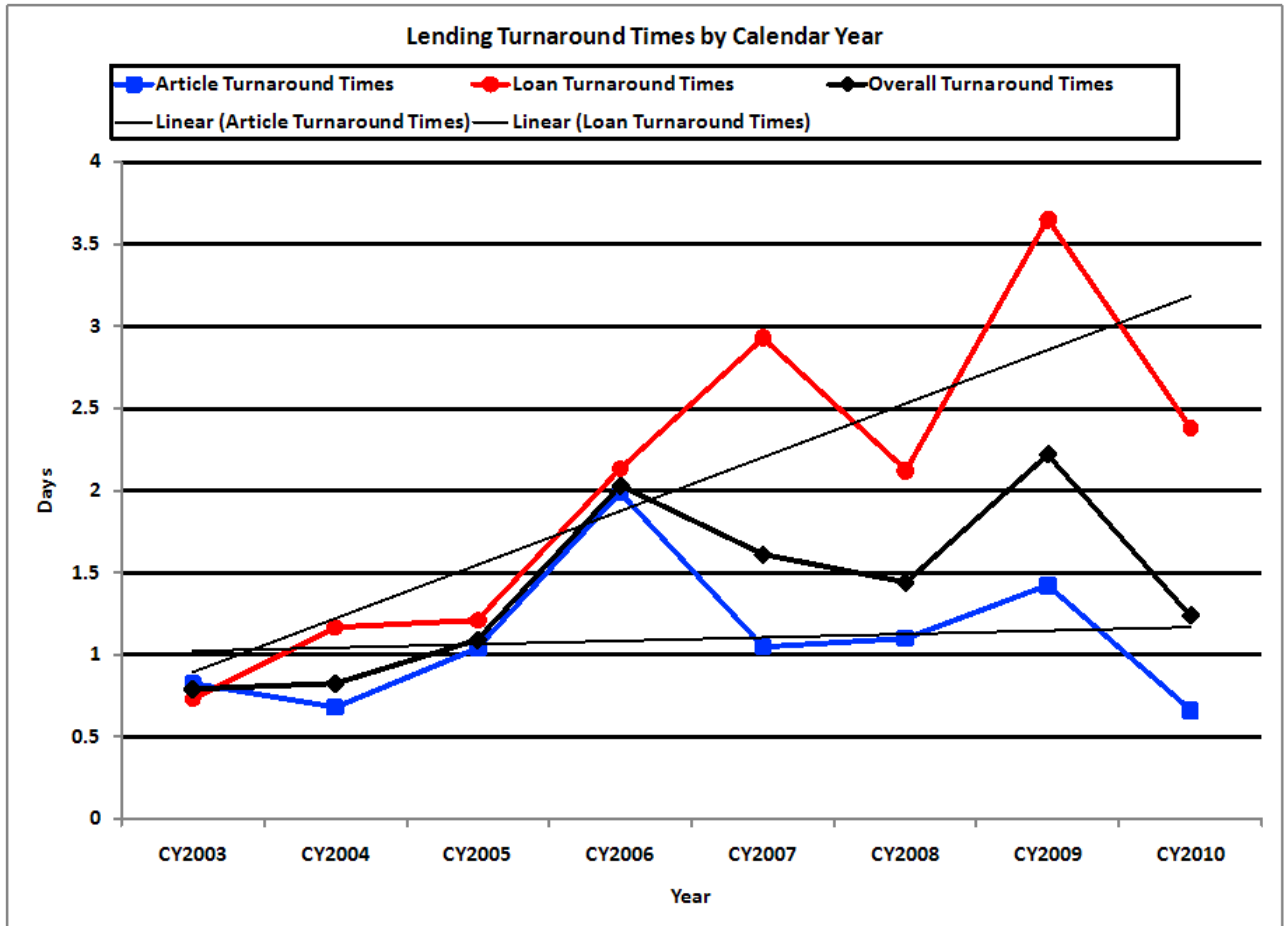
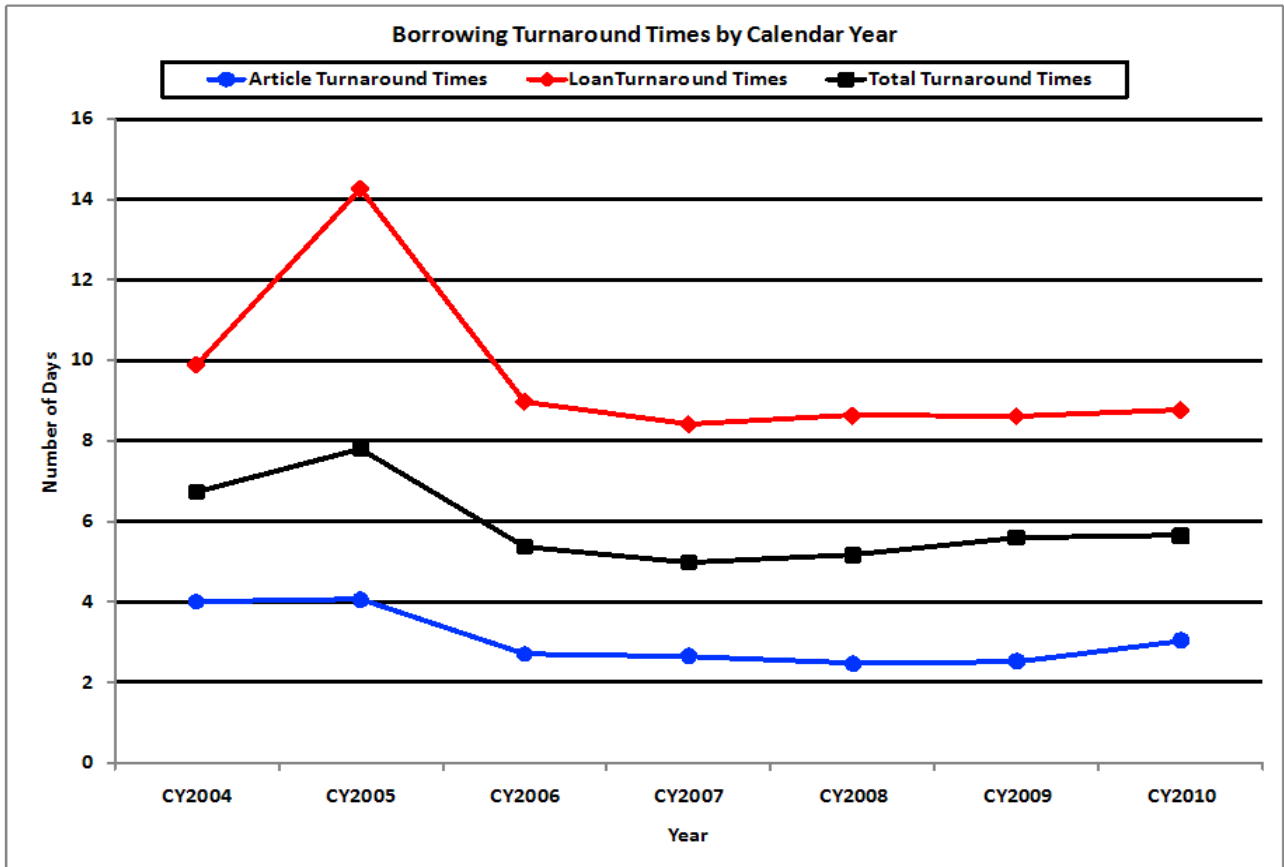
Interlibrary Services Specialist – Joann Bennett, Lending – Bobby Horner
 Document Delivery and Lending – Jeremy Wilson
 Borrowing – Abby Albert, Lori Worcester, and Seth Gonzales*, one vacant borrowing position

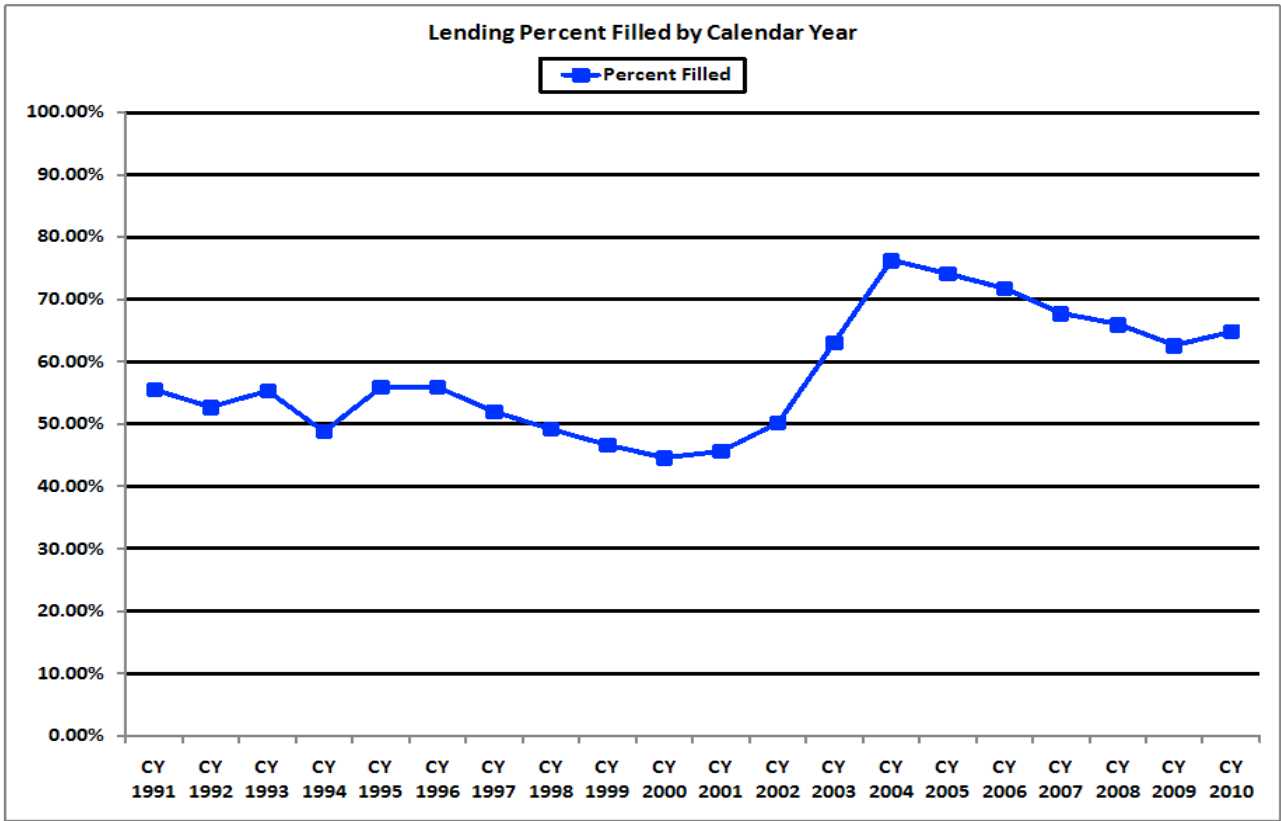
Requests Processed:

	CY2000	CY2001	CY2002	CY2003	CY2004	CY2005	CY2006	CY2007	CY2008	CY2009	CY2010
Lend	21387	26198	31646	34714	41185	43740	44969	46635	43628	46529	50343
Bor/DD	19618	18373	15755	14903	19269	25930	27123	31945	36938	41317	32157
Doc Del					416	4349	9299	10873	12012	10543	8639

*Document Delivery requests are received in Borrowing in Illiad and are routed to Document Delivery.

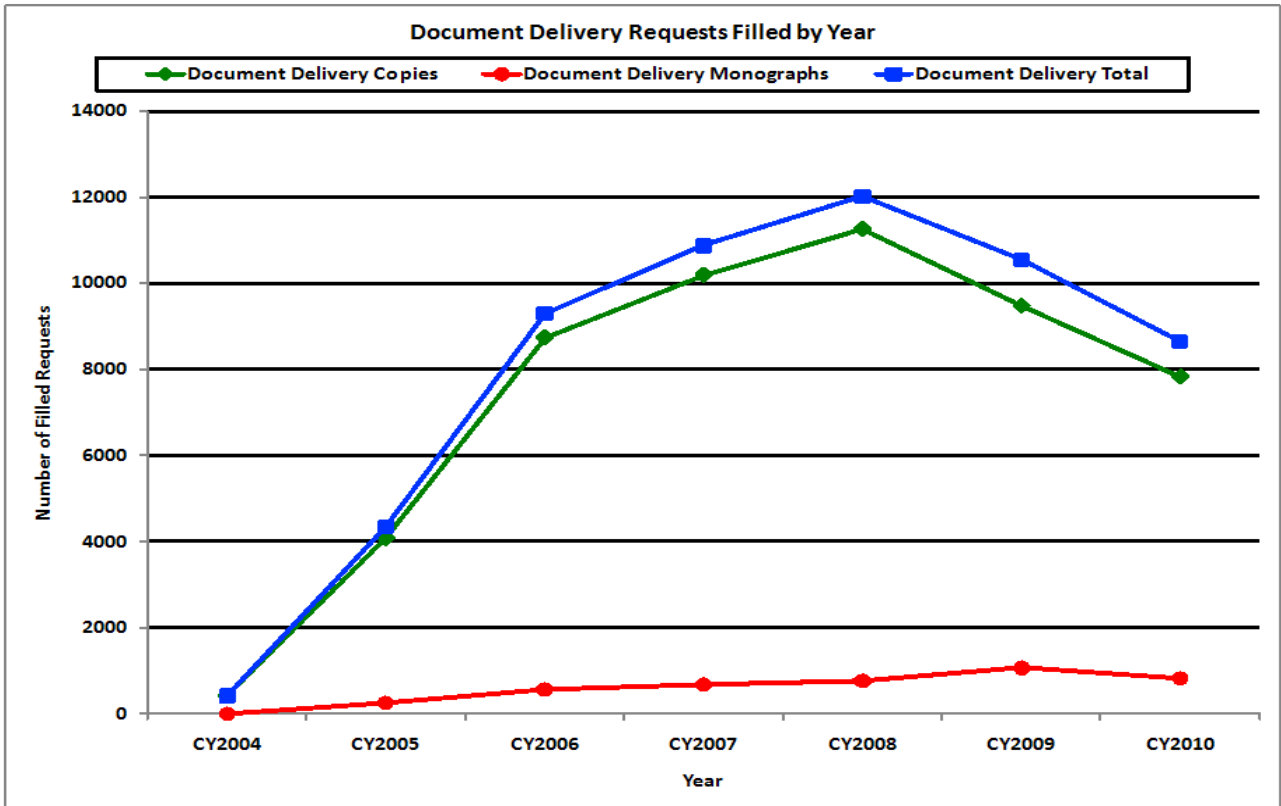






Document Delivery:

	CY2004	CY2005	CY2006	CY2007	CY2008	CY2009	CY2010
Copies	416	4081	8734	10189	11250	9472	7821
Loans	0	268	565	684	762	1071	818
Totals	416	4349	9299	10873	12012	10543	8639



Document Delivery: Total of 56,131 requests - 51,963 articles and 4,168 loans

RAPID Consortia: Article requests only

Joined RAPID in April, 2004. Since then (through Jan, 2010), we have processed:

Lending: Received 66,290 requests and filled 84.71 % or 56,155.

Borrowing: Submitted 64,760 requests and 94.50% were filled or 61,197.

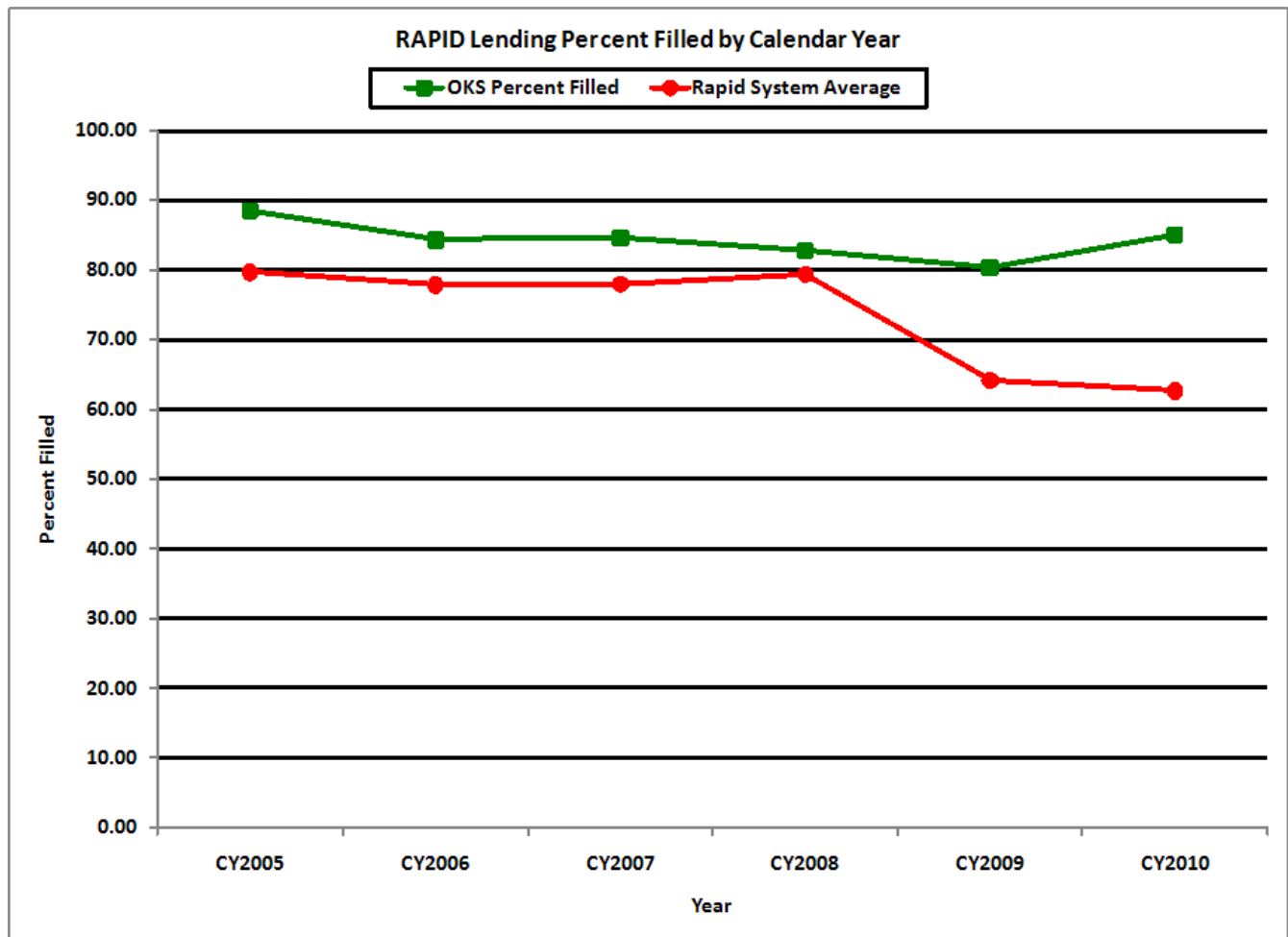
RAPID Article Requests Processed:

	<u>CY05</u>	<u>CY06</u>	<u>CY07</u>	<u>CY08</u>	<u>CY09</u>	<u>CY10</u>
Lending	8,258	9,546	11,345	10,288	9,999	13,324
Borrowing	6,890	9,037	11,714	12,515	11,859	10,189

RAPID Members:

RAPID currently has 195 members (an increase of 24), and we reciprocate with about 143 of them.

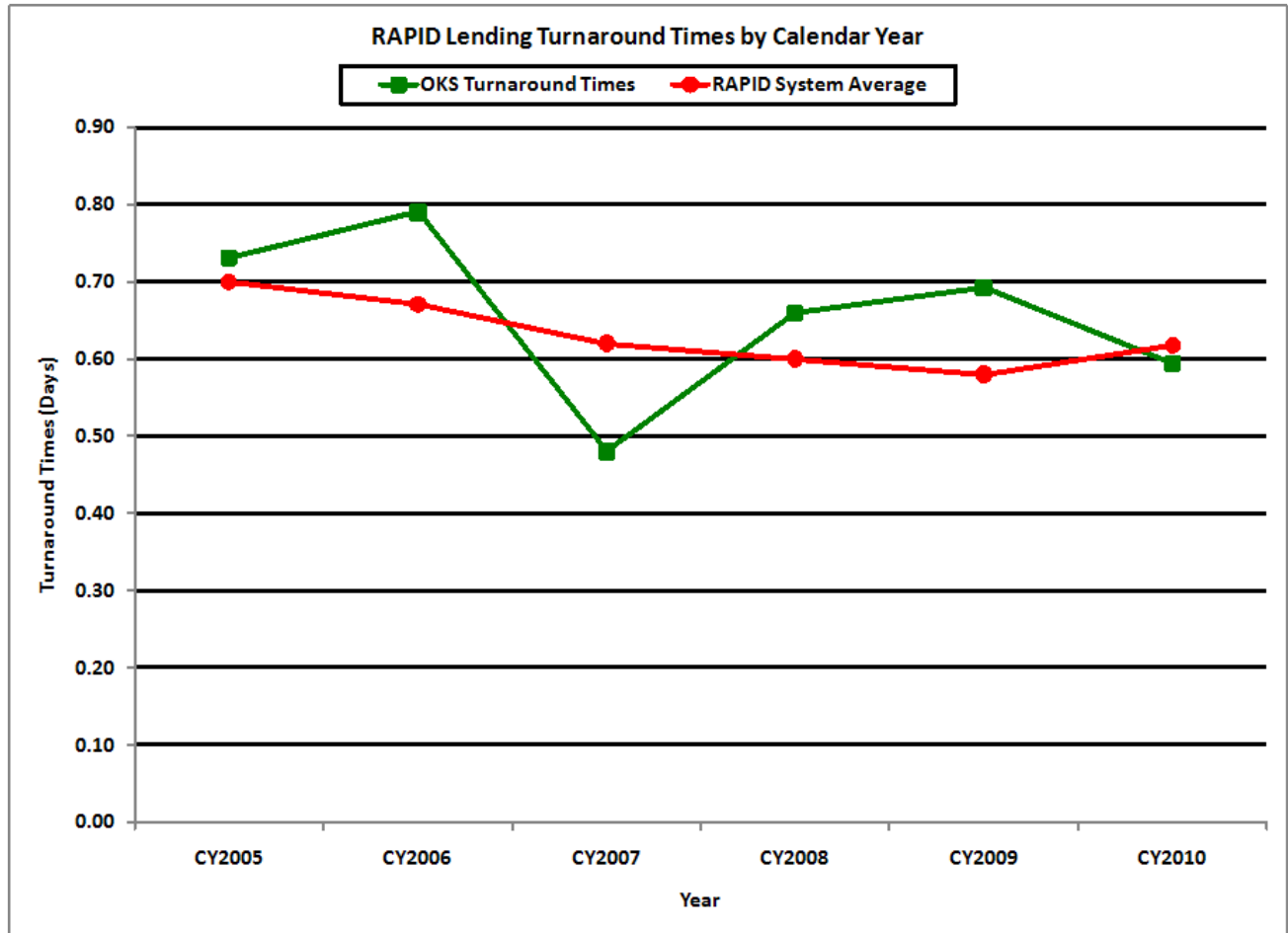
RAPID Fill Rates:



Turnaround Times:

RAPID: Every RapidILL library signs a contract that includes peer to peer service commitments. Service performance is closely monitored by Rapid staff.

Rapid participants agree to provide 24 hour turnaround time (Monday-Friday) for lending requests.



GWLA: Minimum standards for GWLA Libraries

April, 2004

Loans: 80% within 5 days

Copies: 85% within 3 days

July, 2007

Loans: 80% within 4 days

Copies: 85% within 2 days

July, 2008

Loans: 80% within 4 days

Copies: 85% within 1 day

July, 2009

Loans: 80% within 4 days

Copies: 85% within 30 hours

February, 2010

Loans: 80% within 5 days

Copies: 85% within 3 days

GWLA Lending and Borrowing

Net Balance FY 2010

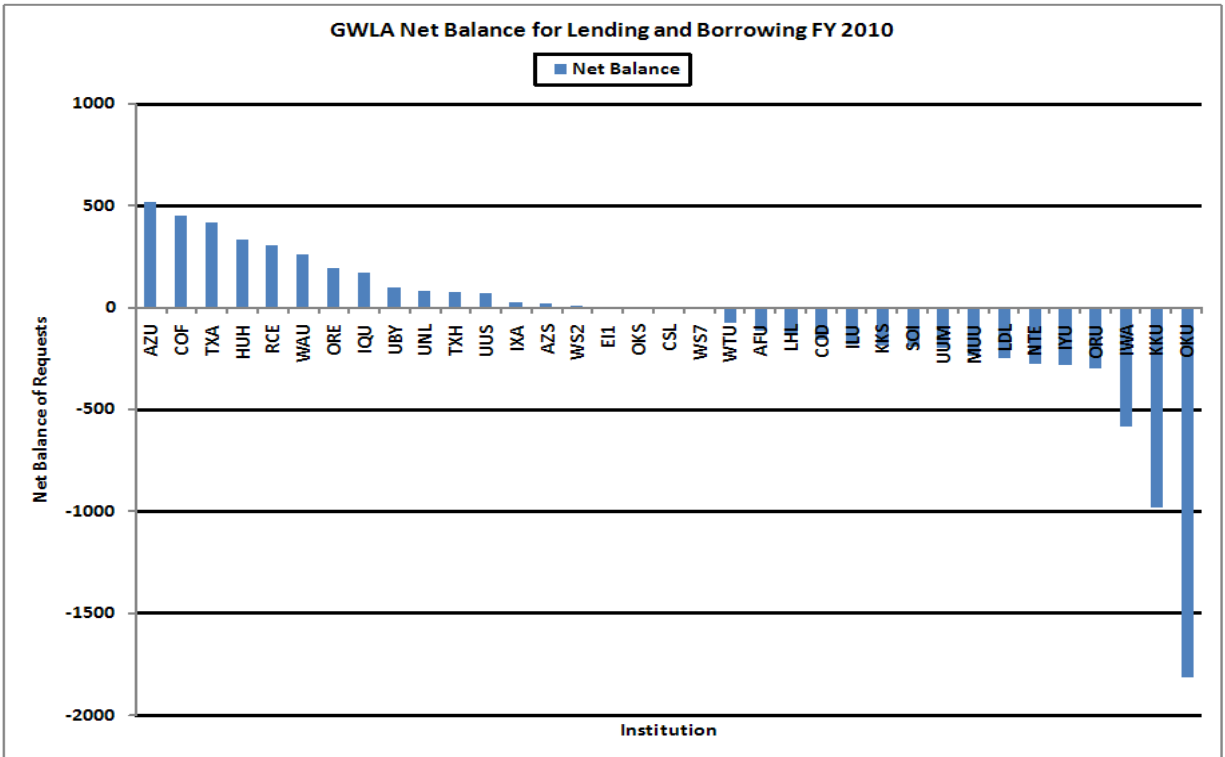
		Lending	Borrowing	Net
Symbol	Library Name	Requests Filled	Requests Filled	Difference
AZU	University of Arizona	756	238	518
COF	Colorado State Univ.	755	307	448
TXA	TAMU Libraries - College Station	1051	636	415
HUH	University of Hawaii at Manoa Libraries	346	14	332
RCE	Rice University	435	132	303
WAU	University of Washington Libraries	283	23	260
ORE	Oregon State University	340	150	190
IQU	University of New Mexico	485	315	170
UBY	Brigham Young University	359	264	95
UNL	University of Nevada - Las Vegas	100	20	80
TXH	University of Houston	196	122	74
UUS	Utah State University	142	74	68
IXA	University of Texas - Austin	393	367	26
AZS	Arizona State University	395	377	18
WS2	Vancouver Library - Washington State Uni	10	8	2
EI1	Washington State University Tri-Cities R			0
OKS	Oklahoma State University		3	-3
CSL	University of Southern California- ILL	195	201	-6
WS7	Spokane Library - Washington State Unive	2	14	-12
WTU	Washington University	157	235	-78
AFU	University of Arkansas	844	958	-114
LHL	Linda Hall Library		139	-139
COD	University of Colorado	79	241	-162
ILU	Texas Tech University	326	508	-182
KKS	Kansas State University	538	727	-189
SOI	Southern Illinois University - Morris Li	70	263	-193
UUM	University of Utah, Marriott Library	176	378	-202
MUU	University of Missouri - Columbia	204	445	-241
LDL	University of Nebraska - Love Library	400	651	-251
NTE	Washington State Univ., Pullman Library	152	431	-279
IYU	Baylor University	140	425	-285
ORU	University of Oregon	126	428	-302
IWA	Iowa State University	137	719	-582
KKU	University of Kansas - Watson Library	418	1394	-976
OKU	University of Oklahoma	435	2246	-1811

TOTALS

10445

13453

-3008



**GWLA Lending and Borrowing
Net Balance CY 2010**

Symbol	Library Name	Lending Requests Filled	Borrowing Requests Filled	Net Difference
TXA	TAMU Libraries - College Station	1208	471	737
COF	Colorado State Univ.	720	174	546
AZU	University of Arizona	684	169	515
RCE	Rice University	517	99	418
HUH	University of Hawaii at Manoa Libraries	329	4	325
WAU	University of Washington Libraries	293	17	276
IQU	University of New Mexico	496	249	247
ORE	Oregon State University	316	89	227
UBY	Brigham Young University	342	133	209
IXA	University of Texas - Austin	409	259	150
ILU	Texas Tech University	459	311	148
TXH	University of Houston	192	59	133
UUS	Utah State University	122	57	65
AZS	Arizona State University	343	279	64
UNL	University of Nevada - Las Vegas	78	20	58
CSL	University of Southern California- ILL	159	126	33
KKS	Kansas State University	642	615	27
WS2	Vancouver Library - Washington State Uni	16	5	11
E11	Washington State University Tri-Cities R			0
OKS	Oklahoma State University		6	-6
WS7	Spokane Library - Washington State Unive		9	-9
WTU	Washington University	124	152	-28

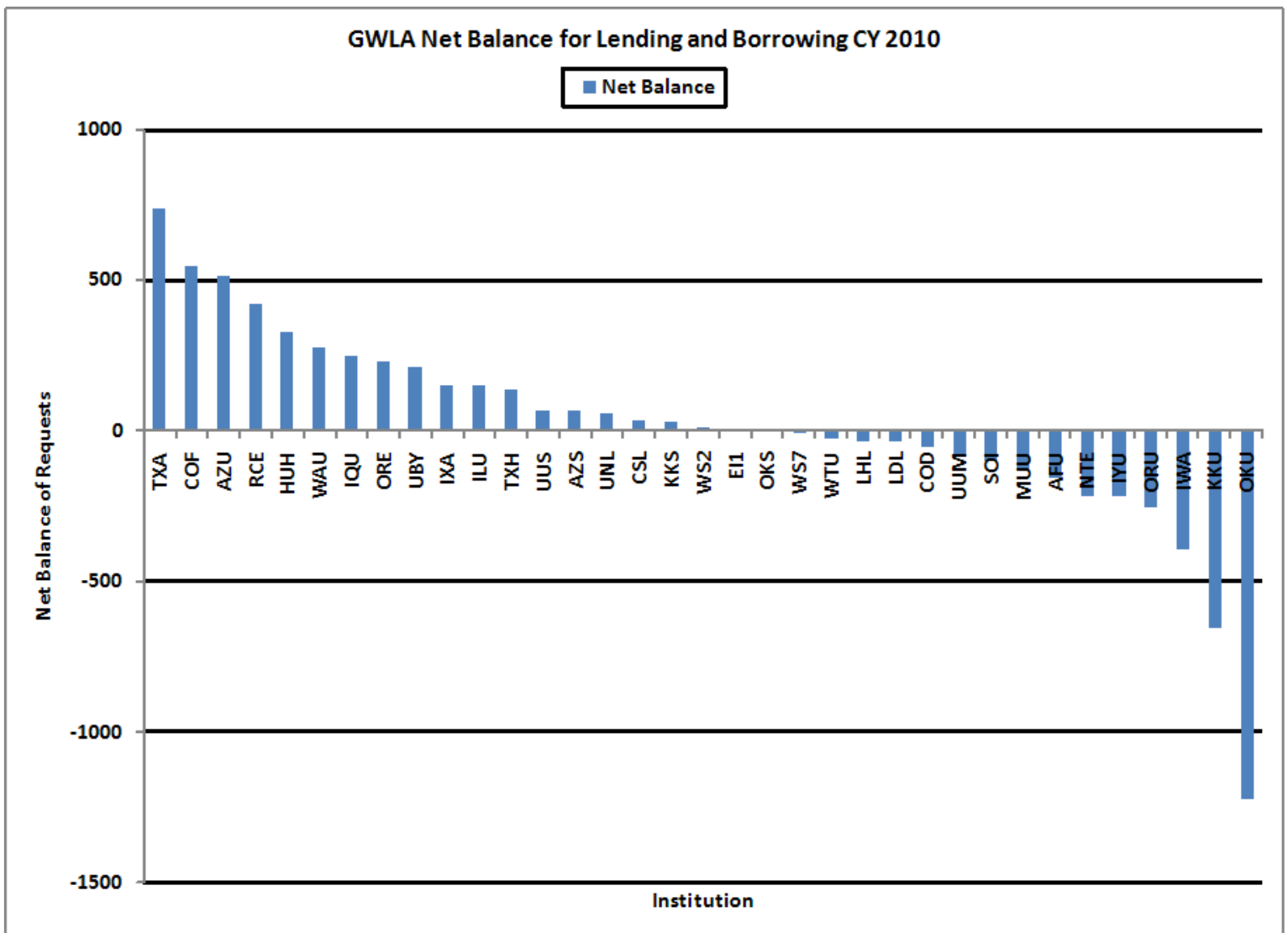
LHL	Linda Hall Library		36	-36
LDL	University of Nebraska - Love Library	468	506	-38
COD	University of Colorado	109	166	-57
UUM	University of Utah, Marriott Library	181	267	-86
SOI	Southern Illinois University - Morris Li	71	175	-104
MUU	University of Missouri - Columbia	205	338	-133
AFU	University of Arkansas	753	914	-161
NTE	Washington State Univ., Pullman Library	131	345	-214
IYU	Baylor University	135	350	-215
ORU	University of Oregon	171	423	-252
IWA	Iowa State University	142	533	-391
KKU	University of Kansas - Watson Library	373	1024	-651
OKU	University of Oklahoma	441	1665	-1224

TOTALS

10629

10045

584



ILS Statistics:

<http://www.library.okstate.edu/access/ils/statistics.htm>

This presentation:

<http://www.library.okstate.edu/access/ils/ILSReportFeb2011.pdf>

Current and Future Projects:

1. Cease processing patron requests for books owned by the OSU Library.
2. With help from Systems, implement unmediated borrowing in RAPID.
3. With help from Systems, implement unmediated lending in RAPID.
4. Increase use of Local Holdings capability in RAPID.
5. Reduce Lending Turnaround Times.
6. Increase Lending Fill Rates.
7. Implement Purchase On Demand for monographs requested which meet criteria.
8. Continue to provide journal data to the Collection Development Committee.
9. Continue to provide Most Borrowed Monographs data to Collection Development.
10. Investigate the possibilities of incorporating applications from the IDS Project:
<http://www.idsproject.org/>
Workflow Toolkit
GIST