

Interlibrary Services LAC Report November 19, 2008

Staff:

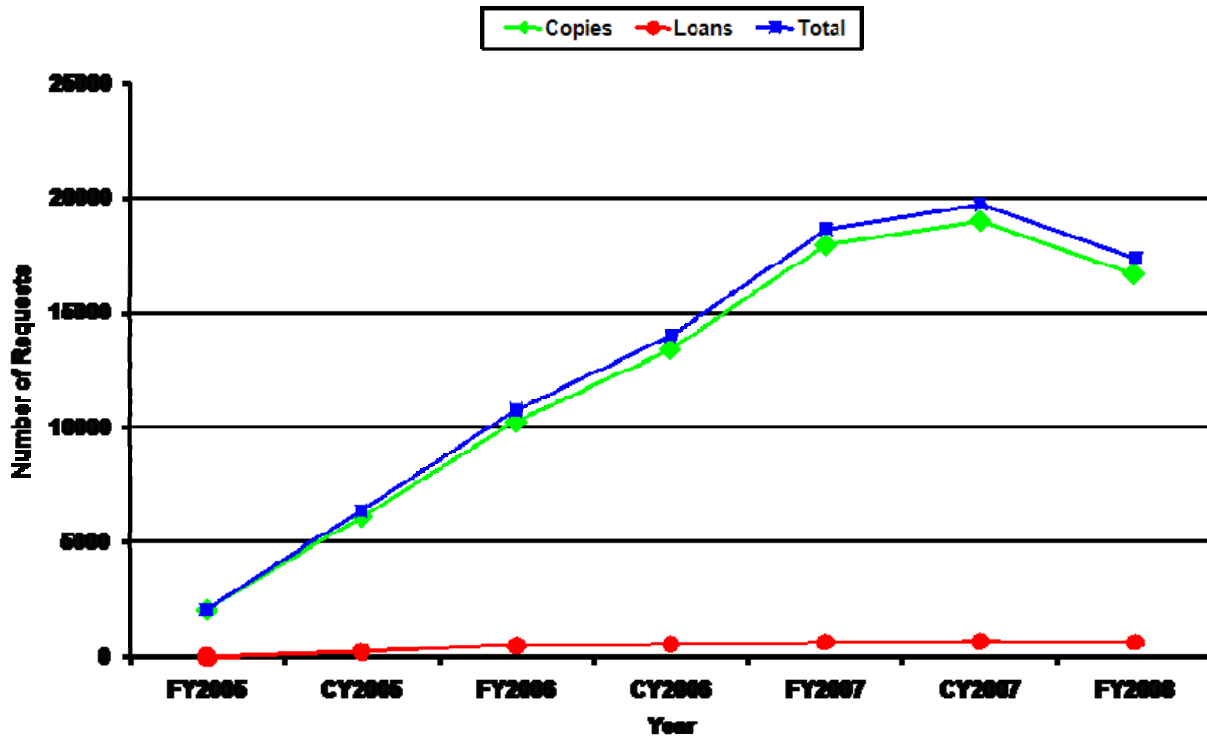
Interlibrary Services Specialist – Joann Bennett, Lending - Libby Hieber
 Document Delivery and Lending – Jeremy Wilson
 Borrowing – Abby Albert, Bobby Horner, and Lori Foltz*,

Requests Processed:

	FY00	FY01	FY02	FY03	FY04	FY05*	FY06*	FY07	FY08
Lend	32,286	35,724	44,294	49,506	37,711	42,550	45,659	44,640	46,404
Borrow	22,266	20,916	18,473	16,887	18,513	22,376	26,059	30,352	34,275
Document Delivery (filled):						2,115	10,790	18,625	17,370

*Document Delivery requests are received in Borrowing in Illiad and are routed to Document Delivery.

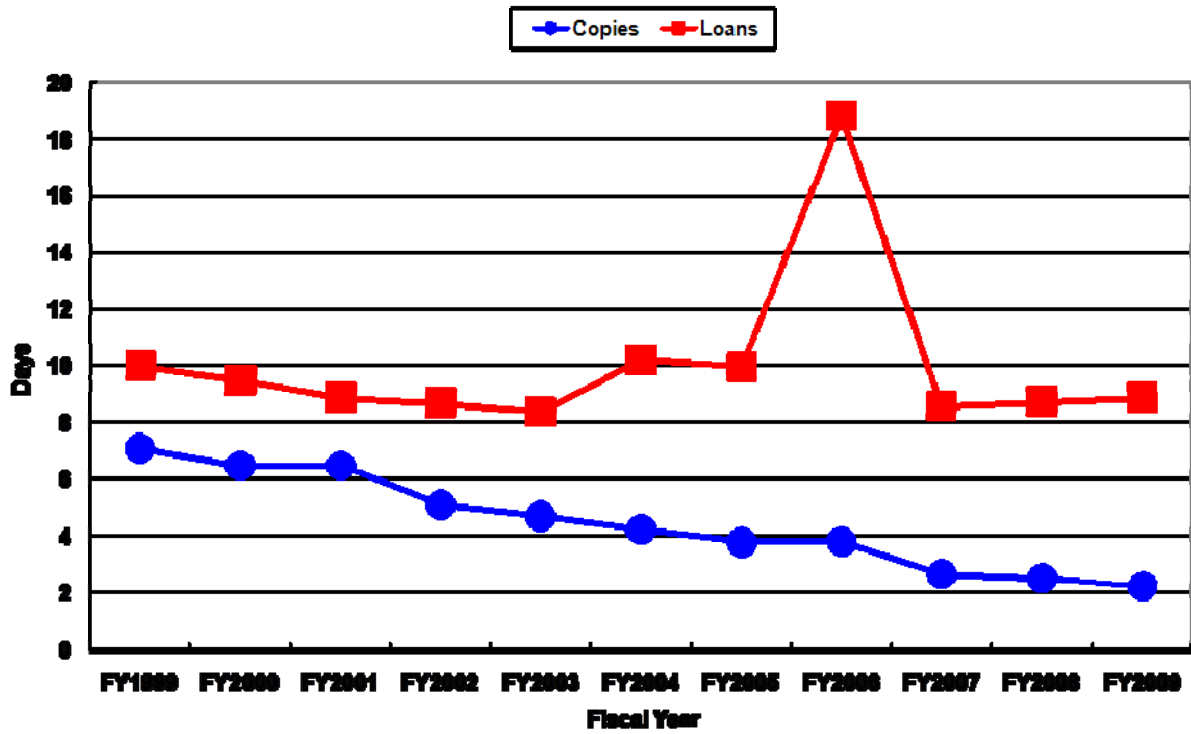
Document Delivery Requests Filled



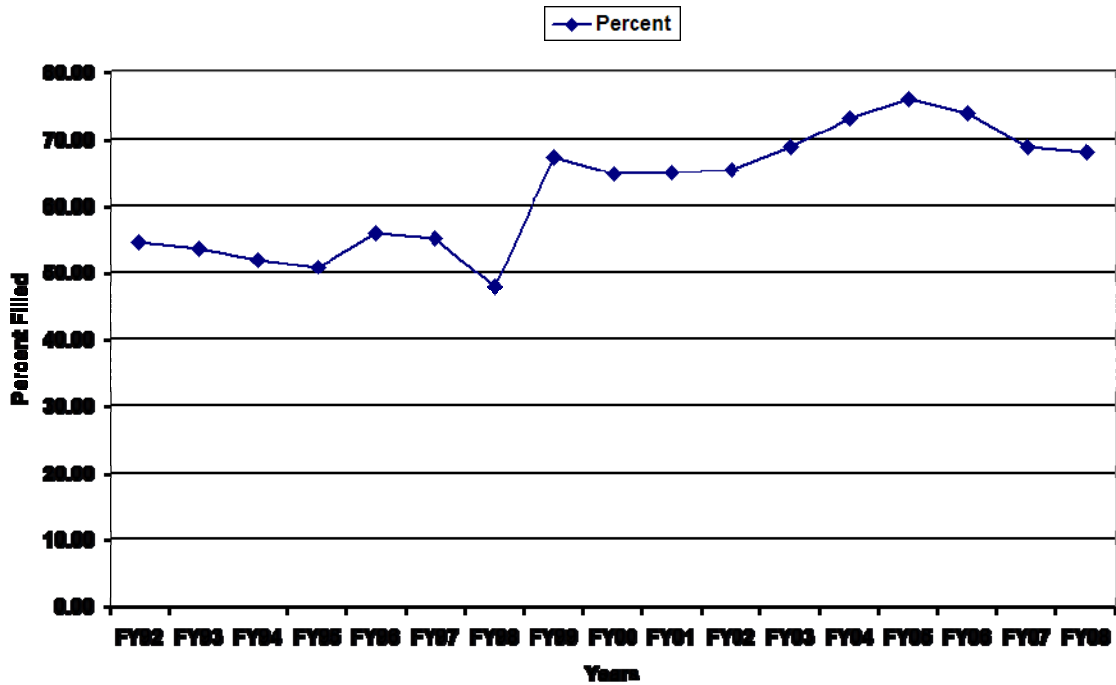
Document Delivery: Total of 52,820 requests 50,624 articles and 2,196 loans

	<u>FY05</u>	<u>FY06</u>	<u>FY07</u>	<u>FY08</u>
Copies	2,099	10,259	17,951	16,692
Loans	16	531	674	678
TOTALS	----- 2,115	----- 10,790	----- 18,625	----- 17,370

Borrowing Turnaround Times



Lending Fill Rate



RAPID Consortia:

Joined RAPID in April, 2004. Since then, we have processed:

Lending: Received 40,719 requests and filled 86.24 % or 34,950.

Borrowing: Submitted 38,042 requests and 94.73% were filled or 36,038.

RAPID Requests Processed:

	FY05	FY06	FY07	FY08
Lending	7,712	9,005	10,421	11,568
Borrowing	4,834	8,226	10,891	12,079

RAPID Members:

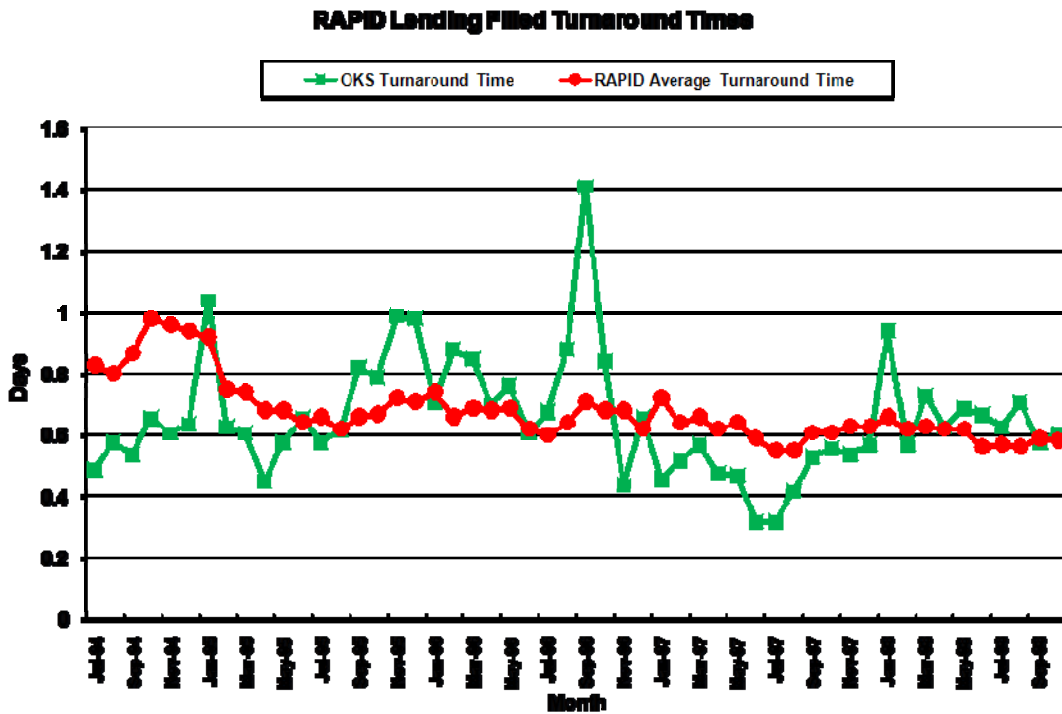
RAPID currently has 123 members, and we reciprocate with 80 – 90 of them.

Turnaround Times:

RAPID: Every RapidILL library signs a contract that includes peer to peer service commitments.

Service performance is closely monitored by Rapid staff.

Rapid participants agree to provide 24 hour turnaround time (Monday-Friday) for lending requests.



GWLA: Minimum standards for GWLA Libraries

April, 2004

Loans: 80% within 5 days

Copies: 85% within 3 days

July, 2007

Loans: 80% within 4 days

Copies: 85% within 2 days

July, 2008

Loans: 80% within 4 days

Copies: 85% within 1 day

ILS Statistics:

<http://www.library.okstate.edu/access/ils/statistics.htm>

Future Projects:

1. New web pages for Illiad 7.2.
2. With help from Systems, implement unmediated borrowing in RAPID.
3. With help from Systems, implement unmediated lending in RAPID.
4. Increase use of Local Holdings capability in RAPID.
5. Study comparing UPS receipt data with OCLC completion dates.
6. Reduce Lending Turnaround Times.
7. Increase Lending Fill Rates.
8. Continue to provide journal data to the Collection Development Committee.
9. Continue to service public printers with paper and toner between 8 a.m. to 5 p.m. Monday thru Friday.